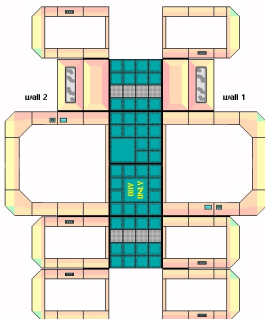


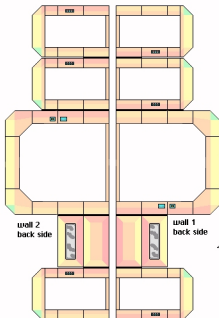
Folding SF Interior 4 - Walls - Sheet 1

Reverses for these walls are on sheet 2.

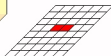


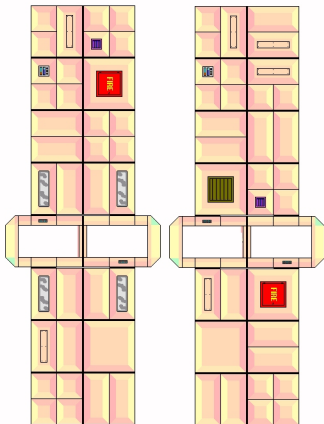
Folding SF Interior 4 - Walls - sheet 2

Reverses for walls on sheet 1.

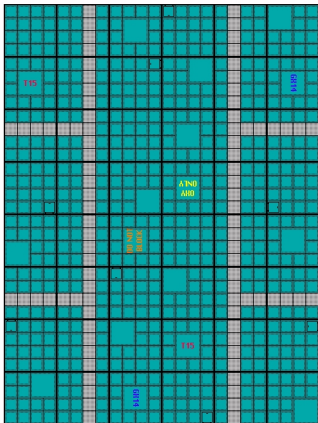


Position wall unit
as indicated.





Folding SF Interior 4 – Floor

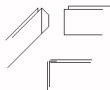


Folding SF Interior 4 - Outer Wall - sheet 1

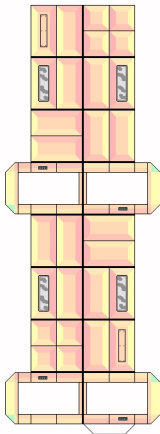
Print 2 x



Inner Door

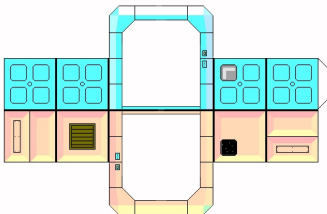
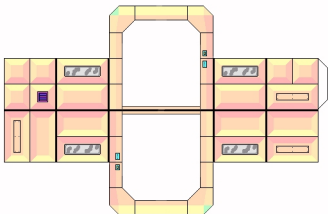


Assemble outer walls as indicated
in above sketch.

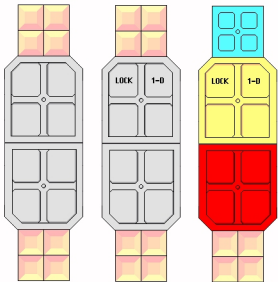


Folding SF Interior 4 - Outer Walls - sheet 2

And this time one really is an outer wall!



Folding SF Interior 4 - Large inner and outer doors



Tip for use:

This interior combines perfectly with Interior 2, as long as you use the outer walls on this one, and none on #2.

Now you can let your smalls pods or mechs cross corridors from the airlock via a small maintenance room into a larger hangar.